

# DS-K4H250S

## Single-door Magnetic Lock

The DS-K4H250SSingle-door magnetic lock is designed for wooden door, glass door, and steel door with the opening angle of 90°. The maximum thrust of the lock is 300kg. It can be used for controlling door opening/closing, and the indicator shows the door status. It supports signal output of door lock output status testing.



DS-K4H250S

- The magnetic lock supports static linear thrust of 300kg;
- The power supply can be customized to be 12VDC or 24VDC, and the default voltage is 12VDC;
- It is equipped with internal voltage dependent resistor (MOV);
- It is applied to wooden door, glass door, metal door and fireproof door;
- LED indicator displays the status of door lock;
- Signal output of door lock status (NO\NC\COM);
- Anti-residual magnetism design;
- Abrasion-proof materials;
- The shell is made up of aluminum and is hard anodizing electroplated;
- No mechanical failure, and the magnetic lock works by electromagnetism force;

☺

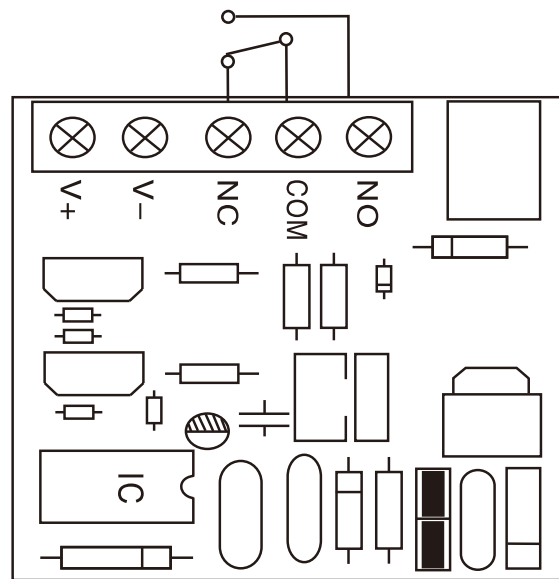
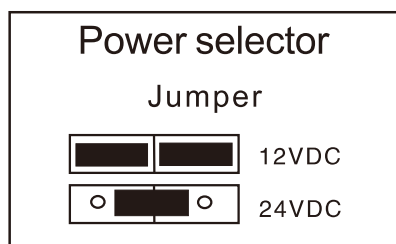
Model	DS-K4H250S
Dimension of Lock Body (L×W×H)	240×49×25.5mm (9.45×1.93×1.00")
Dimension of Armature Plate (L×W×H)	180×38×11mm (7.1×1.5×0.4")
Maximum Thrust	300kg Linear Thrust
Input Voltage	DC12V/DC24V

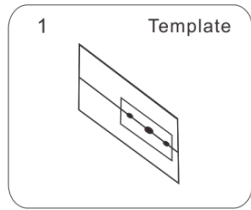
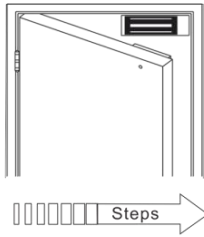
<b>Model</b>	<b>DS-K4H250S</b>
<b>Working Current</b>	12V/500mA      24V/250mA
<b>Signal Output</b>	Dry Contact Signal Output, Support Maximum Power Rate of 3A, NO Output While Locking and NC Output While Unlocking
<b>LED Indicator</b>	Red (Door is Unlocked)      Green (Door is Locked)
<b>Suitable Door</b>	Wooden Door, Glass Door, Metal Door, Fireproof Door
<b>Working Temperature</b>	-10°C to +55°C (14°F to 131°F)
<b>Working Humidity</b>	0 to 95% (Relative Humidity)
<b>Shell</b>	Hard Anodizing Electroplating Operated
<b>Lock Body</b>	Eco-friendly Zinc with Electroplating Operated
<b>Armature Plate</b>	Eco-friendly Zinc with Electroplating Operated
<b>Weight</b>	2.1kg(4.63lb)



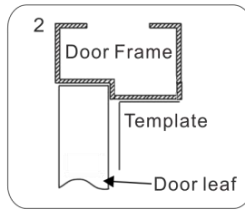
### Lock status sensor

1. Normally open switch: NO and COM
2. Normally colsed switch: NC and COM

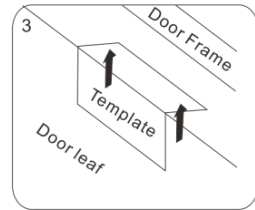




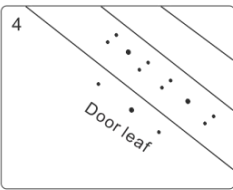
1 Fold the plate to 90°.



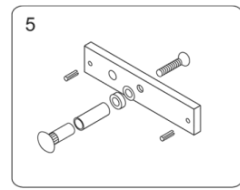
2 Close the door first, then place the upper side of template on door frame, while adjust the left side next to the door leaf.



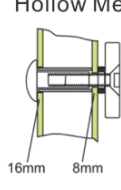
3 Mark screw positions of armature plate and magnetic lock on door leaf and door frame respectively.



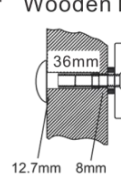
4 Drill holes based on the marked positions.



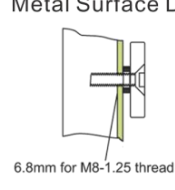
5 Make a combination based on the picture.



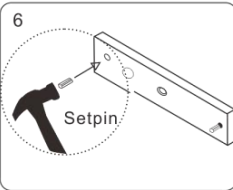
Hollow Metal Door  
Drill a hole  
Inside: Diameter is 8mm  
Outside: Diameter is 16mm



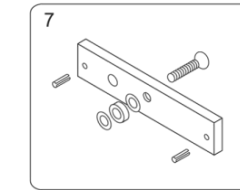
Wooden Door  
Drill a hole  
Inside: Diameter is 8mm  
Outside: Diameter is 12.7mm



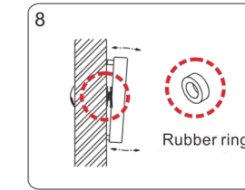
Metal Surface Door  
Inside: Drill a hole diameter is 8mm folding the plastic straight pin



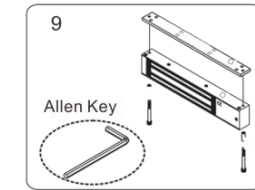
6 Strike the pin into the armature plate slightly (to avoid movement).



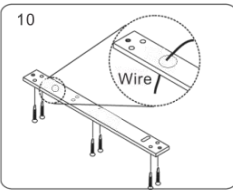
7 Make a combination based on the picture (add washer accordingly). The rubber ring must be added.



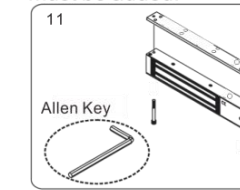
8 Place the rubber ring between armature plate and door leaf.



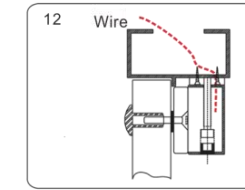
9 Use Allen key to remove the mounting plate from lock body.



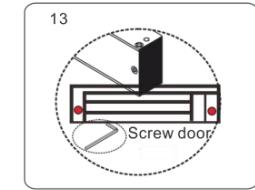
10 Fix the mounting plate on the door frame according to the holes drilled earlier.



11 Use Allen key to screw the lock body on the mounting plate.



12 Close the door to test holding force. The angle between armature plate and magnetic lock can be adjusted by adding or reducing washers.



13 After all the appropriate procedures, the holding force can be maximized. Finally, fix the tamper screw.

**Installation Instruction**

